

CONCERNING



TESTIMONIALS

FROM

MEMORIAL CRAFTSMEN
CONCERNING VARIOUS ATTRIBUTES
OF SMITH-BARRE GRANITE



E. L. SMITH & CO , QUARRIERS
ESTABLISHED 1868
BARRE , VERMONT

GREAT SATISFACTION

“**W**E will not only be willing to have this Winslow mausoleum appear with our name as designers and builders, but are also very glad to say that E. L. Smith & Co.'s Barre Granite was used in the mausoleum to the *great satisfaction* of our client and ourselves.”

F. B. FARRINGTON
Farrington, Gould & Hoagland
New York City

☛ Specify Smith-Barre for your own satisfaction, and your client's.

E. L. SMITH & CO. - QUARRIERS



*ERECTED BY FARRINGTON, GOULD & HOAGLAND
EXECUTED BY COOK, WATKINS & PATCH, INC.
BOSTON, MASS., AND BARRE, VT.*

BARRE ▸ VERMONT

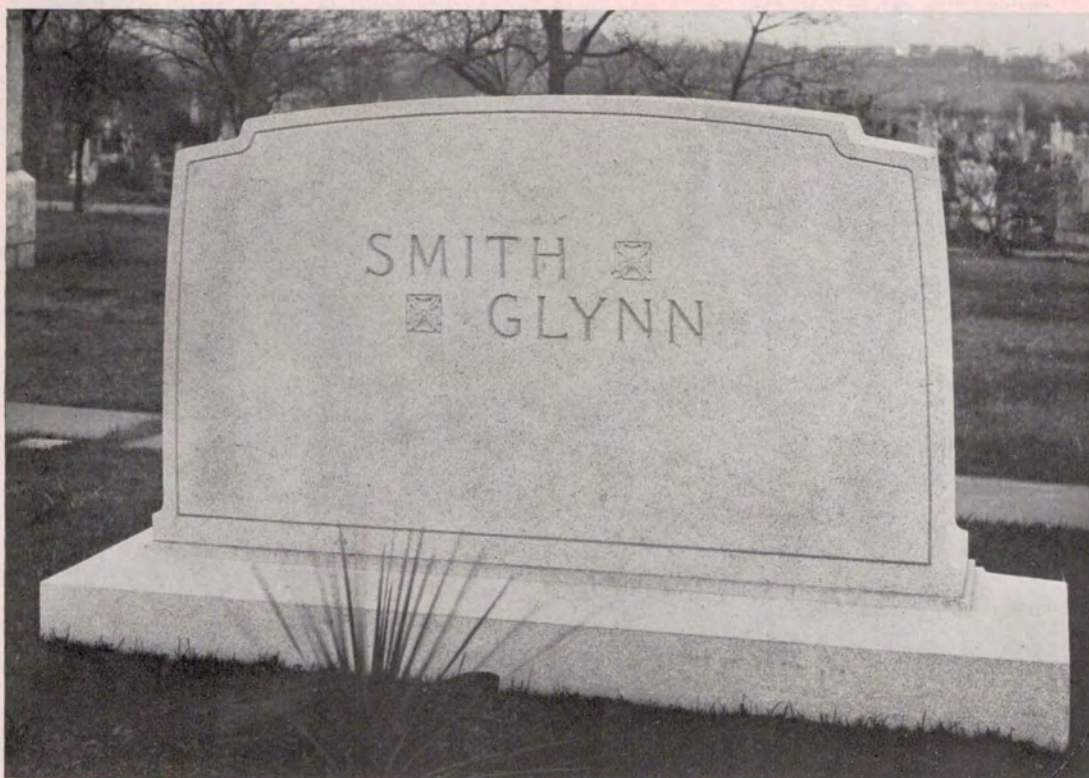


PAST EXPERIENCE

“**T**HIS monument was designed and erected by us for the family of the Hon. Governor Alfred E. Smith of the State of New York. It was erected by the Governor and his sister, Mrs. Glynn, as a memorial to their mother. We have made it a point on a great deal of our work to specify Smith-Barre granite because *we know from past experience* that the stock will give lasting satisfaction to our clients as well as ourselves.”

J. L. WEGENAAR CO., INC.
New York City

E. L. SMITH & CO. - QUARRIERS



*ERECTED BY J. L. WEGENAAR CO., INC.
EXECUTED BY JOHNSON & GUSTAFSON, BARRE, VT.*

BARRE ▸ VERMONT



EQUAL TO ANY

“**H**AVING considerable experience in various granites I have always found Smith-Barre Granite satisfactory and *equal to any* of the granites of my experience.”

E. T. EVERETT
Mahanoy City, Pa.

☛ The Smith-Barre quarries are always in condition to furnish any size or quantity of stock desired. In no quarry in the world is fine stone more accessible.

E. L. SMITH & CO. QUARRIERS

**ERECTED BY E. T. EVERETT
CELTIC CROSS EXECUTED BY
EXCELSIOR GRANITE CO., MONTPELIER, VT.**



E. L. SMITH & CO. QUARRIERS

NOTHING BETTER

“**R**EGARDING Smith-Barre Granite we find that on account of the fine grain and even texture of Smith-Barre there is *nothing better* that we have received on which to execute fine, sharp line work.”

E. B. McCOLLY & SON
Greensburg, Pa.

¶ The satisfaction of working in a good material finds its fullest expression in Smith-Barre granite. And in Smith-Barre that satisfaction remains through the course of centuries.

E. L. SMITH & CO. QUARRIERS



*ERECTED BY E. B. McCOLLY & SON
EXECUTED BY BARCLAY BROS., BARRE, VT.*

BARRE • VERMONT



EVERLASTING BEAUTY

“**I**N our past years of experience in monumental work we have found *everlasting beauty* in the quality of Smith-Barre granite. All sand-carving, lettering and hand work can be executed in this fine grained granite to the highest standard; which has been proven in this Sproesser memorial.”

MR. EDWIN WOELFFER
Watertown Memorial Co., Inc.
Watertown, Wis.

E. L. SMITH & CO. QUARRIERS



*ERECTED BY WATERTOWN MEMORIAL CO., INC.
EXECUTED BY NORTH BARRE GRANITE CO., BARRE, VT.*

BARRE , VERMONT



CLEAN AS WHEN FIRST ERECTED

“SMITH-BARRE granite seems to fit into the landscape; has more natural appearance and stays clean longer. I guarantee to my customers that it will stay clean for more than 25 years without any attention. The Woburn Civil War memorial which is in Smith-Barre granite has been erected 25 years and is *as clean today as when first erected.*”

CHARLES ROESSLER
Roessler & Sons, Inc.
Woburn, Mass.

☛ Mr. Roessler also sold and erected the Woburn World War Memorial in Smith-Barre granite, illustrated on the opposite page.

E. L. SMITH & CO. • QUARRIERS



EXECUTED AND ERECTED BY ROESSLER & SONS, INC.

BARRE , VERMONT



BEAUTIFUL LUSTRE

“**W**E use Smith-Barre granite for our light granite work because it hammers very close and has a white appearance and a *beautiful lustre*.”

HERMAN T. YOUNG
Catawissa, Pa.

❧ No stock gives an axed finish superior to that of Smith-Barre. This is due to its perfect balance of mineral elements, and its even texture. And the finish is as durable as it is attractive.

E. L. SMITH & CO. ▸ QUARRIERS



ERECTED BY HERMAN T. YOUNG

EXECUTED BY SOUTH BARRE GRANITE CO., BARRE, VT.

BARRE • VERMONT



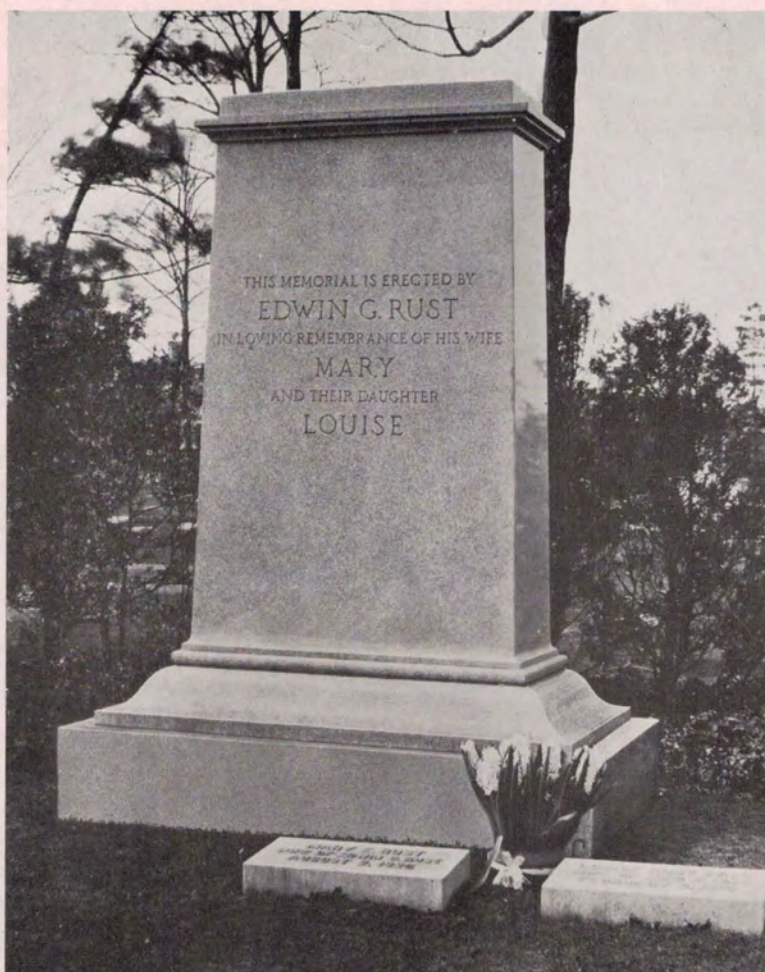
A NICE PIECE OF STONE

“**T**HE Rust monument is all-polished dark stock. It is certainly *a nice piece of stone.*”

CHAS. H. FRENCH, *Mgr.*
The Joseph Carabelli Company
Cleveland, Ohio

☞ Because Smith-Barre is so widely known as a perfect material for axed work, do not get the impression that it is not equally effective, in the dark grade, for polishing. It is adaptable in the highest degree to every form of craftsmanship, and universally serviceable.

E. L. SMITH & CO. ▸ QUARRIERS



*ERECTED BY THE JOSEPH CARABELLI COMPANY
EXECUTED BY NOVELLI & CALCAGNI, INC., BARRE, VT.*

BARRE , VERMONT



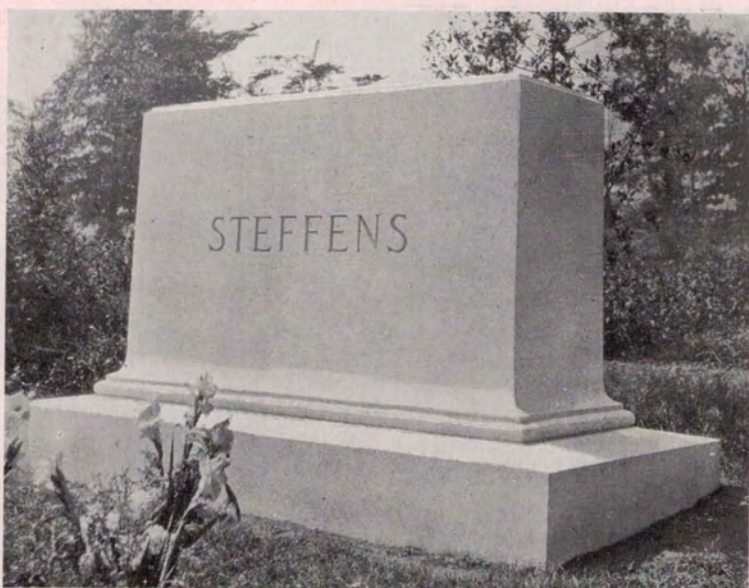
ALWAYS SATISFACTORY

“**I** HAVE found Smith-Barre Granite equal to any granite in Barre, and *it always proves satisfactory.*”

WILLIAM E. BROWN
Clifton, N. J.

☞ Profit by the experience of others. You can save yourself trouble, expense, and disappointment by specifying Smith-Barre, an established stone from an established firm. You can't get anything better — there isn't anything.

E. L. SMITH & CO. ▸ QUARRIERS



*ERECTED BY WILLIAM E. BROWN
EXECUTED BY JOHNSON & GUSTAFSON, BARRE, VT.*

BARRE , VERMONT



FINE AND EVEN TEXTURE

“**W**E selected Smith-Barre granite because we desired the stock to be of *fine and even texture* that would take a fine finish when hammered. We also wanted granite that would show both the raised design and sand blast letters. All this was obtained in this memorial, and furthermore, we feel certain that it will always retain its beauty by remaining free from discoloration that might be caused by the elements. Our client and ourselves were both very much pleased by the memorial in every respect and believe it a credit to both the quarriers and the manufacturer.”

A. L. HATOSKY
Benton Harbor Monument Works
Benton Harbor, Mich.

E. L. SMITH & CO. QUARRIERS



*ERECTED BY BENTON HARBOR MONUMENT WORKS
EXECUTED BY COOK, WATKINS & PATCH, INC.
BOSTON, MASS., AND BARRE, VT.*

BARRE ▸ VERMONT

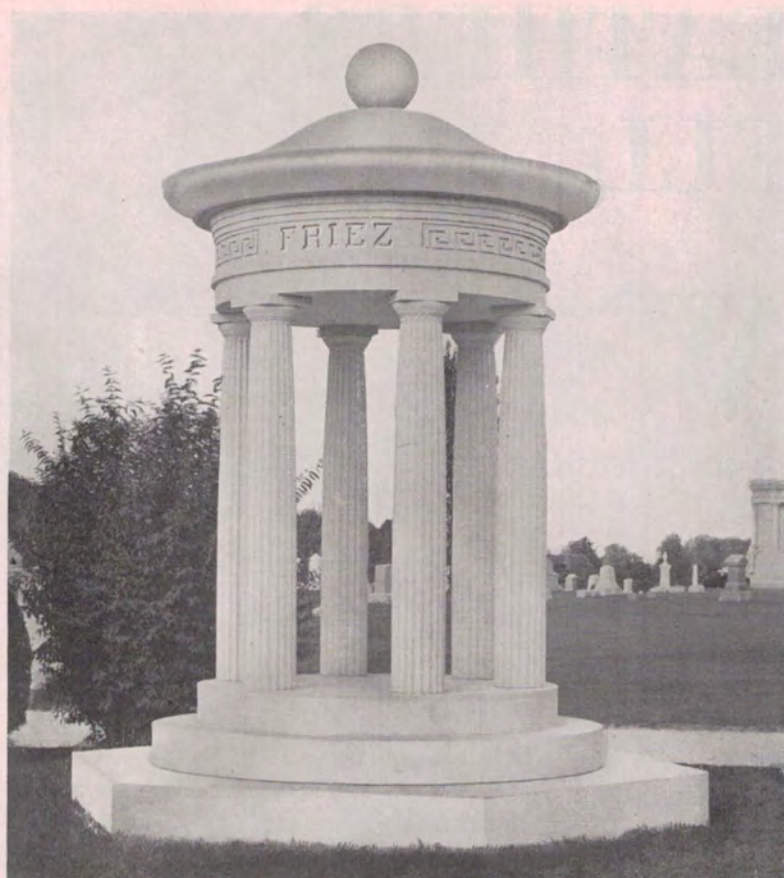


EXCELLENT WORKING QUALITIES

“SMITH-BARRE granite was used for the Friez memorial on account of its most *excellent working qualities*, its clean, clear appearance and freedom from all imperfections. It has always given satisfaction.”

A. R. BAXTER
Alexander McDonald Co.
Trenton, N. J.

E. L. SMITH & CO. QUARRIERS



*ERECTED BY ALEXANDER McDONALD CO.
EXECUTED BY GREARSON & LANE CO., INC., BARRE, VT.*

BARRE , VERMONT



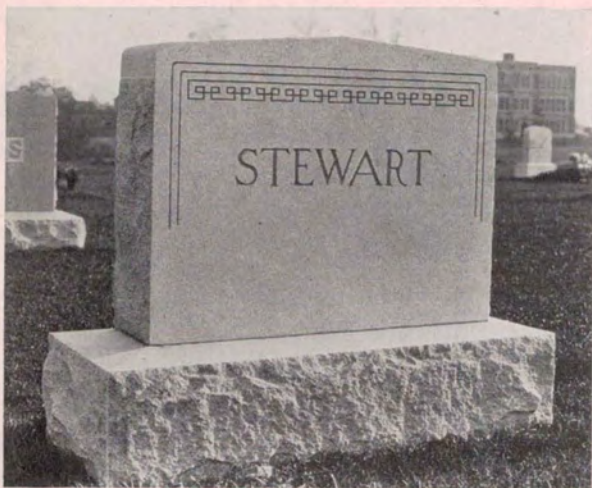
WEATHERS WELL

“**W**E find that Smith-Barre granite is an easy working stone of uniform texture and fine grain, and it also *weathers well.*”

GEORGE W. WILKINSON & SON
Baltimore, Md.

☞ Smith-Barre is a pure igneous granite, the finest type of stone for memorial use, and one of the rarest of geological formations.

E. L. SMITH & CO. ▸ QUARRIERS



EXECUTED AND ERECTED BY GEORGE W. WILKINSON & SON

BARRE ▸ VERMONT

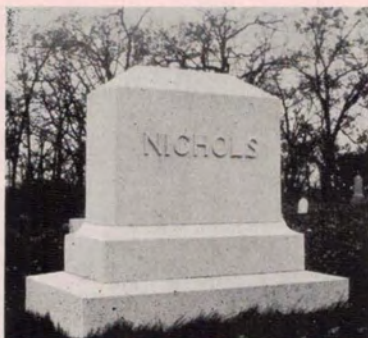


FOR ALL AXED WORK

“**T**HE Eli E. Manor memorial was cut by the Gerrard-Barclay Granite Co., Barre, Vt., in 1914 and was set in Genoa, Wis. This photograph was taken by an amateur photographer, November 8, 1926, showing the monument after twelve years of exposure and there are no defects in it today. I specify E. L. Smith best stock *for all of my axed work.* To give you an idea of the size of the Manor memorial, the base is 7 ft. 4 in. It would take me a long time to explain the good points of Smith-Barre granite. I have used it for the past twenty-one years, and it has not left me with a single dissatisfied customer. I am using Smith-Barre granite for all of my axed work.”

CHARLES A. ELLISON
Hebron, Ill.

E. L. SMITH & CO. ▸ QUARRIERS



**ERECTED BY CHARLES A. ELLISON
MANOR MEMORIAL EXECUTED BY
GERRARD-BARCLAY GRANITE CO., BARRE, VT.**



BARRE , VERMONT



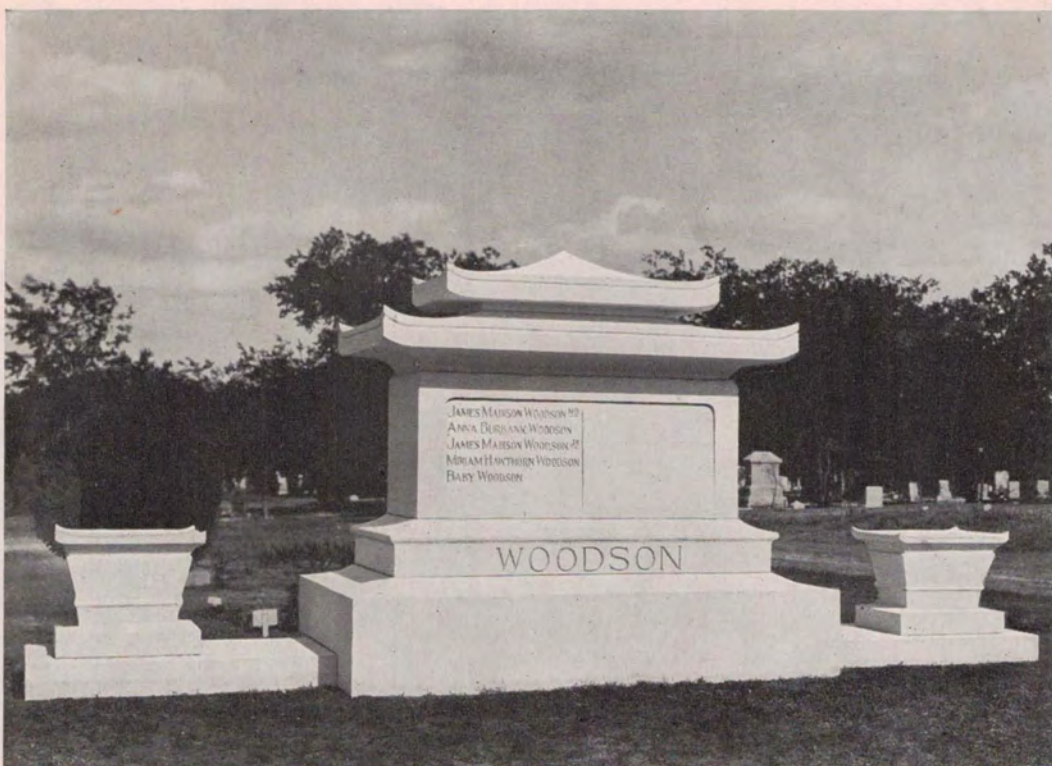
CUSTOMERS SPECIFY IT

“**W**E have made considerable use of Smith-Barre granite during the last few years and we are well pleased with the way it works, especially with the fine hammered finish that we have been able to get with its use. *We have customers who specify and require it.*”

A. E. EVANS
Southern Memorial Co.
Yoakum, Texas

☛ When you order rough stock, ask for a Smith-Barre Rough Stock Certificate. It is a guarantee of quality and performance.

E. L. SMITH & CO. ▸ QUARRIERS



EXECUTED AND ERECTED BY SOUTHERN MEMORIAL CO.

BARRE • VERMONT



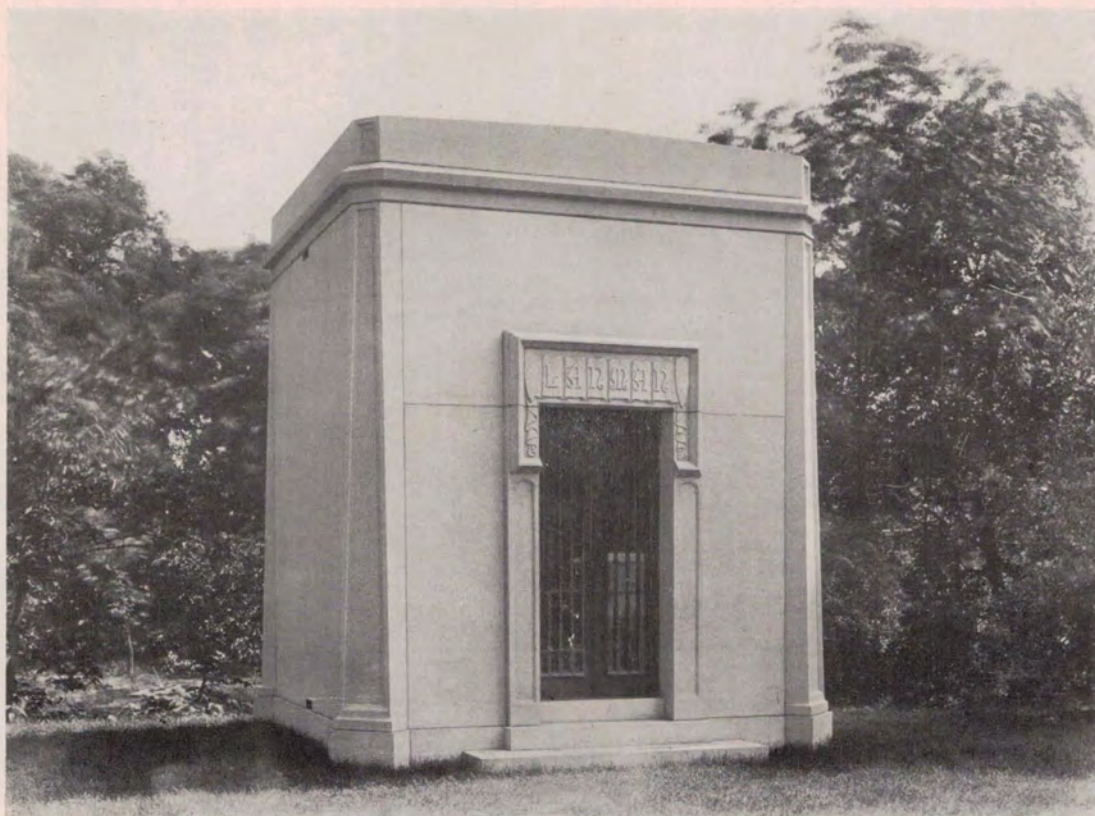
RECOMMENDED TO ANYONE

“**O**UR dealings with the E. L. Smith & Co. have always been very satisfactory and *we would not hesitate to recommend them to anyone* in the market for Barre granite.”

HARRISON GRANITE CO.
New York City

☛ Smith-Barre granite is unexcelled for work on which the technical and artistic demands are exacting. It is uniform, clean working, and durable to the finest detail.

E. L. SMITH & CO. ▸ QUARRIERS



EXECUTED AND ERECTED BY HARRISON GRANITE CO.

BARRE , VERMONT

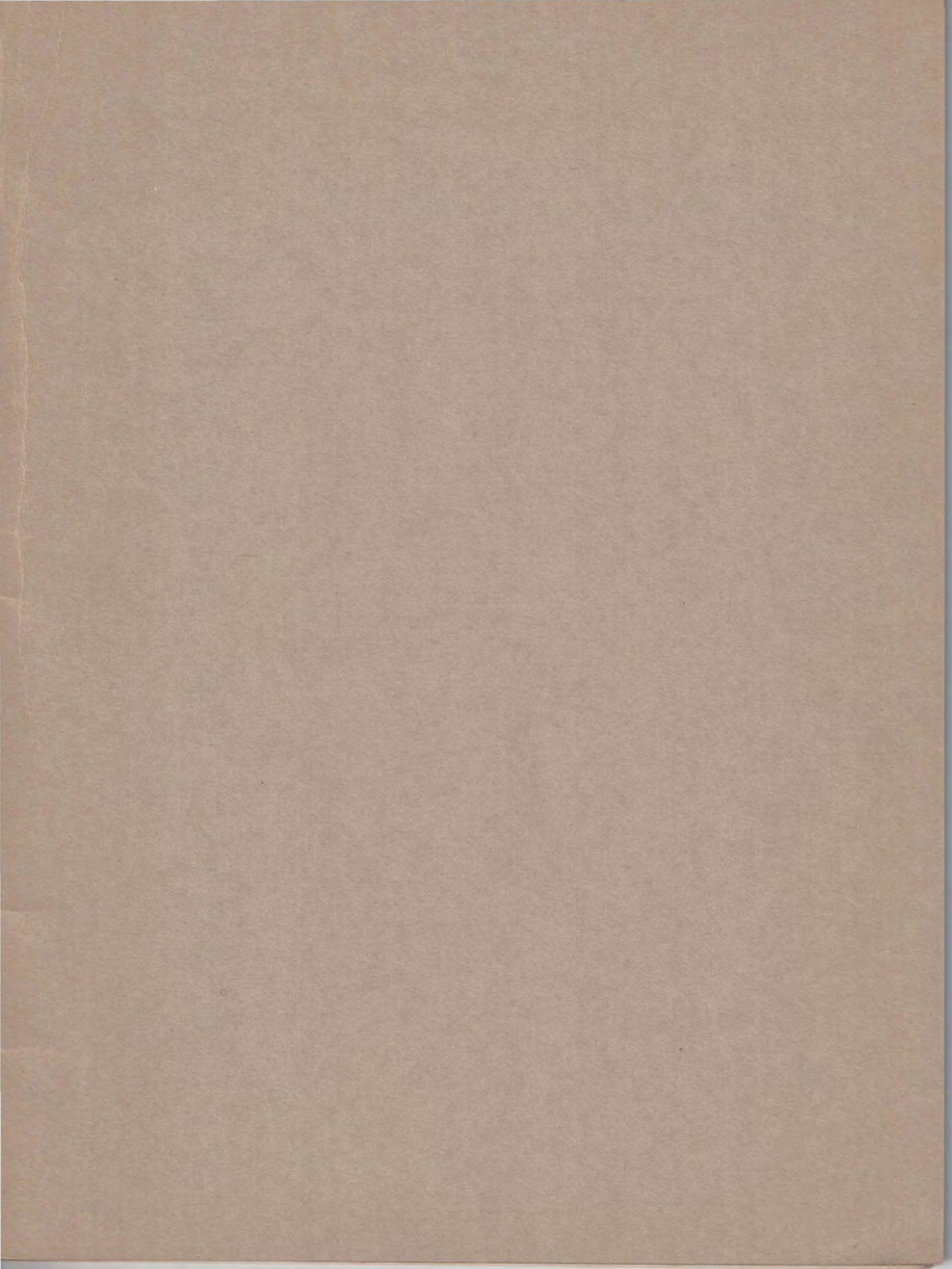


HONOR THEM WITH A MONUMENT



Smith-Barre Memorial Certificate

Our representative inspects all Certified Smith-Barre memorials after completion and prior to shipment. This service protects both dealer and customer.



CERTIFIED



E. L. SMITH & CO
BARRE, VERMONT